



Lacrosse Canada Penalty Administration Guidelines
SECTION 9.1 ADMINISTRATION OF COINCIDENTAL PENALTIES

- i) **Cancel as many penalties as possible.**
- ii) **If possible, cancel in a way to make the on-floor situation such that one team will play full strength and the other team is only one player short.**
- iii) **If possible, cancel in a way to avoid taking an extra player off the floor.**
- iv) **All major coincidental penalties with matching minors are offsetting.
Substitute off the bench to the floor for the coincidentally penalized players.
There is no time on the penalty clocks for the coincidental penalties.**
- v) **All major coincidental penalties with non-matching minors require substitution in the penalty box for the non-matching minor penalty.**
- vi) **First in first out principle is used such that the player with the least amount of penalty time is released first.**
- vii) **When a player receives a minor and major, they will serve the minor first.**
- viii) **If a goal has been allocated to a major you must continue to allocate to the major.**
- ix) **Penalty shots - allocate a penalty shot goal scored to the player with the least amount of time remaining on their minor penalty or one goal off the major penalty with the least amount of time remaining.
TWO PLAYERS DOWN AND ADDITIONAL PENALTY TO THIRD PLAYER - If a team is already two (2) players down from full strength and is assessed as an additional time penalty to a third player, the non-offending team shall be awarded a penalty shot. Regardless of the outcome of the penalty shot, the floor strength will remain as it was prior to the penalty shot. The team that received the third timeserving penalty will begin play after the penalty shot, two players down from full strength. Third player serves penalty time in the box and releases the following player from the penalty box prior to the penalty shot. Release the player with the least amount of penalty time on a minor or one goal attached to a major penalty.**
- x) **Player receiving a major penalty will serve the penalty time in its entirety. The player is released upon expiry of the full penalty time, on the next non-technical stoppage of play. If two goals are scored on the major then the team may substitute a player from the team's player bench onto the floor. The substitute player shall serve Goalkeepers major penalties.**
- xi) **If a player who has incurred penalty time that results in a substitute from the bench serving a portion of their time then the penalized player will only remain in the penalty box for the balance of time the sub is not serving. The substitute player always serves shorter time or equal time compared to the penalized player and the substitute player always returns to the floor before or at the same time as the penalized player. The substitute player never stays in the penalty box longer than the penalized player.**
- xii) **Match penalties – substitute must serve the penalty time. The substitute serves the full time regardless of the number of goals scored.**
- xiii) **A minor penalty is released when the penalized team is playing short-handed and a goal is scored against them.**

- xiv) The designated in-home may be any runner on the team. A goalkeeper cannot be designated as the in-home. The in-home player will serve any non-designated player penalty, bench minor, or minor and major penalty to the goalkeeper.

Penalty Administration Checklist Illustrated

Team "A"	Team "B"
A1 - 2min + 5min @ 4:00	B1 - 5min @ 4:00
A2 - 5min @ 4:00	B2 - 2min @ 4:00
A3 - 2min @ 4:00	B3 - 5min @ 4:00
	B4 - 2min @ 4:00

1. CANCEL AS MANY PENALTIES AS POSSIBLE.

Team "A"	Team "B"
A1 - 2min + 5min @ 4:00	B1 - 5min @ 4:00
A2 - 5min @ 4:00	B2 - 2min @ 4:00
	B3 - 5min @ 4:00
	B4 - 2min @ 4:00

2. CANCEL IN A WAY TO MAKE THEM ONLY ONE PLAYER SHORT.

Team "A"	Team "B"
A1 - 2min + 5min @ 4:00 A2 - 2min @ 4:00	B1 - 2min @ 4:00 B2 - 2min @ 4:00 B3 - 5min @ 4:00

3. CANCEL IN A WAY TO AVOID TAKING AN EXTRA PLAYER OFF THE FLOOR.

Team "A"	Team "B"
A1 - 2min + 5min @ 4:00	B1 - 5min @ 4:00 B2 - 2min @ 4:00

4. ALL COINCIDENTAL MAJOR PENALTIES WITH MATCHING MINORS ARE OFFSETTING. SUBSTITUTION OFF BENCH TO FLOOR. NO TIME ON CLOCK.

Team "A"	Team "B"
A1 - 5min @ 4:00	B1 - 5min + 2min @ 4:00

5. ALL COINCIDENTAL MAJOR PENALTIES WITH NON-MATCHING MINOR PENALTIES REQUIRE THE IN-HOME TO SERVE THE ADDITIONAL PENALTY TIME.

Team "A"	Team "B"
A1 - 2min @ 6:00 A2 - 2min @ 5:00	Goal @ 4:30
A1 RETURNS TO THE FLOOR	

6. FIRST IN, FIRST OUT. LEAST AMOUNT OF PENALTY TIME IS RELEASED FIRST.

Team "A"	Team "B"
A1 - 2min + 5min @ 6:00	Goal @ 5:45
A1 2min TERMINATED. A1 5min STARTS.	

7. WHEN A PLAYER RECEIVES A MINOR AND MAJOR PENALTY AT THE SAME TIME, THE MINOR PENALTY IS SERVED FIRST.

Team "A"	Team "B"
A1 - 5min @ 6:00	Goal @ 5:30
1st GOAL AGAINST A1 5min	
A2 - 2min @ 5:00	Goal @ 4:30
2nd GOAL AGAINST A1 5min	

8. IF A GOAL IS ATTACHED TO A MAJOR OR MATCH PENALTY YOU MUST CONTINUE TO WORK ON THAT MAJOR OR MATCH PENALTY.

Team "A"	Team "B"
A1 - 2min @ 4:00 A2 - 2min @ 3:30 A3 - 2min @ 3:00	Penalty Shot @ 3:00
RELEASE A1 FROM PENALTY BOX	

Team "A"	Team "B"
A1 - 5min @ 4:00 A2 - 2min @ 3:30 A3 - 2min @ 3:00	Goal @3:50 Penalty Shot @ 3:00
REMOVE A1s PENALTY TIME FROM THE CLOCK (A1 REMAINS IN THE PENALTY BOX)	

. PENALTY SHOTS: WORK ON THE PLAYER WITH LEAST AMOUNT OF TIME ON MINOR PENALTY OR ONE GOAL DEDUCTED FROM MAJOR PENALTY.

Team "A"	Team "B"
A1 - 5min @ 6:00	Goal @ 4:30 Goal @ 3:30
REMOVE A1s PENALTY TIME FROM THE CLOCK (A1 REMAINS IN THE PENALTY BOX). TEAM "A" SUBSTITUTES FROM THE PLAYERS BENCH. A1 RETURNS AT THE FIRST NON-TECHNICAL STOPPAGE AFTER 1:00.	

10. A PLAYER RECEIVING A MAJOR PENALTY WILL SERVE THE PENALTY TIME IN ITS ENTIRETY. THE PLAYER IS RELEASED UPON EXPIRY OF THE FULL PENALTY TIME ON NEXT NON-TECHNICAL STOPPAGE. IF TWO GOALS ARE SCORED DURING THE MAJOR PENALTY HIS TEAM MAY SUBSTITUTE A PLAYER TO THE FLOOR FROM PLAYERS BENCH.

Team "A"	Team "B"
A1 - 2 min + 5min @ 6:00	B1 - 5min @ 6:00
TEAM "A" IS REQUIRED TO PLACE THE IN-HOME INTO THE PENALTY BOX FOR 2min. A1 AND B1 RELEASE FROM THE PENALTY BOX AT THE FIRST NON-TECHNICAL STOPPAGE AFTER 1:00.	

11. IF A PLAYER RECEIVES PENALTY TIME WHICH RESULTS IN THE IN-HOME SERVING A PORTION OF THE PENALTY TIME, THEN THE PLAYER WILL ONLY REMAIN IN THE PENALTY BOX FOR THE BALANCE OF TIME THE IN-HOME IS NOT SERVING.

Team "A"	Team "B"
A1 - 5min Match @ 4:00	Goal @ 3:30 Goal @ 3:00 Goal @ 2:30
TEAM "A" IN-HOME IS PERMITTED TO LEAVE THE PENALTY BENCH FOLLOWING THE 3rd GOAL. A1 WAS IMMEDIATELY REMOVED FROM THE GAME.	

12. MATCH PENALTIES REQUIRE THE IN-HOME TO SERVE THE PENALTY. THE PENALTY WILL BE SERVED IN ITS ENTIRETY UNLESS THREE GOALS ARE SCORED. THE IN-HOME MAY RETURN DIRECTLY TO THE FLOOR AFTER THE THIRD GOAL.

13. Minor penalty release after a goal:

- a) Is the team scored against short-handed?
- b) Are they serving a minor penalty on the clock?

If the answer is YES to both and there are no goal(s) attached to a major/match penalty, then you are to delete the minor penalty with the least amount of time on the clock.

Team "A"	Team "B"
A1 - 5min @ 6:00 A2 - 2min @ 6:00	Goal @ 4:30
A2 RETURNS TO THE FLOOR	

14. WHEN A MAJOR AND MINOR PENALTY ARE ASSESSED AT THE SAME TIME AND TO THE SAME TEAM, THE MINOR PENALTY SHALL BE SERVED FIRST.

Team "A"	Team "B"
A1 - 2min @ 6:00 A2 - 2min @ 5:30 (delay)	Goal @ 5:30
A1 IS RELEASED FROM THE PENALTY BOX AND A2 ENTERS THE BOX FOR 2min,	

15. WHEN A MINOR PENALTY IS ALREADY SERVING TIME IN THE PENALTY BOX AND A DELAYED PENALTY IS BEING ASSESSED AGAINST THE SAME TEAM AND A GOAL IS SCORED (DURING THE DELAY), THE EXISTING MINOR PENALTY IS RELEASED AND THE DELAYED PENALTY ENTERS PENALTY BOX.

Team "A"	Team "B"
A1 - 2min + 5min @ 4:00 A2 - 5min @ 4:00 A3 - 2min @ 4:00	B1 - 5min @ 4:00 B2 - 2min @ 4:00 B3 - 5min @ 4:00 B4 - 2min @ 4:00
NO PENALTY TIME ON THE CLOCK	

6. WHEN COINCIDENTAL MAJOR PENALTIES ARE ASSESSED AND NO OTHER PENALTIES ARE BEING SERVED, TEAMS WILL PLAY FIVE-ON-FIVE. PENALTIES TIME WILL NOT BE ON THE CLOCK. WHEN COINCIDENTAL MINOR PENALTIES ARE ASSESSED, AND NO OTHER PENALTIES ARE BEING SERVED, TEAMS WILL PLAY FOUR-ON-FOUR WITH PENALTY TIME ON THE PENALTY CLOCKS FOR THEIR RESPECTIVE TEAMS.

Team "A"	Team "B"
A1 - 2min @ 6:00	
During the stoppage for penalty assessment to A1...	
B1 - 2min @ 6:00	
TOTAL PENALTY TIME IS EQUAL, RESORT TO ORDER OF OCCURANCE: TEAM "A" POSSESSION	

Team "A"	Team "B"
A1 - 2min @ 6:00	
During the stoppage for penalty assessment to A1...	
B1 - 5min @ 6:00	
TOTAL PENALTY TIME IS NOT EQUAL: TEAM "A" POSSESSION	

Team "A"	Team "B"
A1 - 2min @ 6:00	
While the penalty to A1 is on delay	
B1 - 2min @ 6:00	
TOTAL PENALTY TIME IS EQUAL, RESORT TO ORDER OF OCCURANCE: TEAM "A" POSSESSION	

Team "A"	Team "B"
A1 - 5min @ 6:00	
While the penalty to A1 is on delay...	
B1 - 2min @ 6:00	
TOTAL PENALTY TIME IS NOT EQUAL: TEAM "B" POSSESSION	

Team "A"	Team "B"
During dynamic play, occurring at the same time...	
A1 - 2min @ 6:00	B1 - 2min @ 6:00
PENALTIES ARE EQUAL AND SIMULTANEOUS (NO ORDER OF OCCURANCE): TEAM IN POSSESSION RETAINS POSSESSION	

17. If total penalty time is equal, apply Rule 7.2.2 (order of occurrence): 7.2.2 POSSESSION AFTER MINOR PENALTY - Possession goes to the team fouled, unless the penalty occurs prior to the start of a quarter or overtime period or after the whistle has sounded denoting the scoring of a goal. In these cases the play restarts with a center face-off. If the penalties are simultaneous, possession shall be awarded to the team with the lesser penalty time, or, if penalty times are equal, the ball shall remain with the team in possession at the time of the first infraction, however if ball was loose then a faceoff will restart play.

Penalty Administration Situations

Situation 1	
Team "A"	Team "B"
A1 - 2min @ 6:00	
Floor Strength 4 on 5. Team "B" possession.	
A2 - 2min @ 5:00	
Floor Strength 3 on 5. Team "B" possession.	
Goal @ 4:30	
Floor Strength 4 on 5. A1 returns to the floor @ 4:30 due to having the least amount of penalty time remaining for Team "A."	

Situation 2	
Team "A"	Team "B"
A1 - 2min @ 6:00	
Floor Strength 4 on 5. Team "B" possession.	
B1 - 2min @ 5:30	
Floor Strength 4 on 4. Team "A" possession.	
A2 - 2min @ 5:00	
Floor Strength 3 on 4. Team "B" possession.	
Goal @ 4:30	
Floor Strength 4 on 4. A1 returns to the floor @ 4:30 due to having the least amount of penalty time remaining for Team "A."	

Situation 3	
Team "A"	Team "B"
A1 - 2min @ 4:00	B1 - 2min @ 4:00
Floor Strength 4 on 4. Apply Rule 7.2.6 to determine possession for the restart of play. A1 and B1 will return to the floor at the expiration of their penalty time.	

Exception to Rule 7.2.6 COINCIDENTAL MINOR PENALTIES – Coincidental penalties without any other penalties currently on the penalty clock, which would create a 4 on 4 . When there are no penalties serving time on the clock and coincidental minor penalties of equal duration are imposed against players of both teams, the penalized players shall all take their places in the penalty box and teams shall play 4 on 4. A1 and B1 shall return to the floor at the expiration of their penalty time.

Situation 5	
Team "A"	Team "B"
A1 - 2min @ 6:00	
Floor Strength 4 on 5. Team "B" possession.	
A2 - 2min @ 5:00	B1 - 2min @ 5:00
Floor Strength 4 on 5. Apply 7.2.2 to determine possession for the restart of play. Total penalty time is equal therefore all penalty time cancels out. No penalty time is put on the game clock. A2 and B1 will return to the floor at the first non-technical stoppage following the expiration of their penalty time.	
Goal @ 4:30	
Floor Strength 5 on 5. A1 returns to the floor @ 4:30.	

Situation 6	
Team "A"	Team "B"
A1 - 4min @ 4:00	B1 - 4min @ 4:00
<p>Floor strength 5 on 5. Apply rule 7.2.2 to determine possession for the restart of play. Total penalty time is equal and more than one minor penalty to each team without existing penalties currently on the penalty clock, therefore all penalties cancel out. A1 & B1 will be released from the penalty box at the first non-technical stoppage following the expiration of their penalty time</p>	

7.2.2 If the penalties are simultaneous, possession shall be awarded to the team with the lesser penalty time, or, if penalty times are equal, the ball shall remain with the team in possession at the time of the first infraction, however if ball was loose then a faceoff will restart play.

7.1 TECHNICAL VIOLATIONS - A technical violation shall be defined as any awarding of possession resulting from technical violations such as, an illegal pick, crease violation, thirty seconds violation. Other violations are listed throughout the rulebook.

Situation 7	
Team "A"	Team "B"
A1 - 2min + 5min @ 4:00 A2 - 2min @ 4:00	B1 - 2min @ 4:00 B2 - 2min @ 4:00 B3 - 5min @ 4:00
Floor Strength 5 on 5. Apply 7.2.2 to determine possession for the restart of play. Total penalty time is equal therefore all penalty time cancels out. No penalty time is put on the game clock. A1, A2, B1, B2 and B3 will return to the floor at the first non-technical stoppage following the expiration of their penalty time.	

7.2.2 If the penalties are simultaneous, possession shall be awarded to the team with the lesser penalty time, or, if penalty times are equal, the ball shall remain with the team in possession at the time of the first infraction, however if ball was loose then a faceoff will restart play.

Situation 8	
Team "A"	Team "B"
A1 - 2min + 5min @ 6:00	
Floor Strength 4 on 5. Team "B" possession.	
Goal @ 5:45	
Floor strength remains 4 on 5. A1 - 2min is terminated and A1 - 5min starts.	
Goal @ 5:30	
Floor strength remains 4 on 5. 1st goal off A1 - 5min.	
Goal @ 5:10	
Floor strength 5 on 5. 2nd goal off A1 - 5min. Team A substitutes from the players bench. A1 will return to the floor at the first non-technical stoppage following the expiration of their penalty time.	
If one player gets a 2 + 5 min penalty, the minor penalty will be served first.	

Situation 9	
Team "A"	Team "B"
A1 - 2min @ 6:00 A2 - 5min @ 6:00	
Floor strength 3 on 5. Team "B" possession.	
Goal @ 5:45	
Floor strength 4 on 5. A1 returns to the floor @ 5:45.	
Goal @ 5:30	
Floor strength remains 4 on 5. 1st goal off A2 - 5min.	
Goal @ 5:10	
Floor strength 5 on 5. 2nd goal off A2 - 5min. Team A substitutes from the players bench. A1 will return to the floor at the first non-technical stoppage following the expiration of their penalty time.	
If one players gets a 2min and another player gets a 5min at the same time (both on the same team), the minor penalty is worked on first.	

Situation 10	
Team "A"	Team "B"
A1 - 2min @ 6:00	
Floor strength 4 on 5. Team "B" possession.	
Delayed penalty on A2 - 2min @ 5:30	
Goal while penalty to A2 on delay @ 5:30	
Floor strength 4 on 5. A1 returns to the floor @ 5:30 and A2 goes into the penalty bench for 2min.	
When a goal is scored with a penalty on delay and a penalty is being served, "roll the box."	

Situation 11	
Team "A"	Team "B"
A1 - 5min @ 6:00	
Floor strength 4 on 5. Team "B" possession.	
Goal @ 5:30	
Floor strength remains 4 on 5. 1st goal off A1 - 5min.	
A2 - 2min @ 5:00	
Floor strength 3 on 5. Team "B" possession.	
Goal @ 4:30	
Floor strength 4 on 5. 2nd goal off A1 - 5min. Team A substitutes from the players bench. A1 will return to the floor at the first non-technical stoppage following the expiration of their penalty time.	
Once a goal comes off a major penalty, the next powerplay goal will count against the major penalty. You continue to work on the major until its completion.	

Situation 12	
Team "A"	Team "B"
A1 - 2min + 5min @ 4:00	B1 - 5min @ 4:00
A2 - 5min @ 4:00	B2 - 2min @ 4:00
	B3 - 5min @ 4:00
Floor Strength 5 on 5. Apply 7.2.2 to determine possession for the restart of play. Total penalty time is equal therefore all penalty time cancels out. No penalty time is put on the game clock. A1, A2, B1, B2 and B3 will return to the floor at the first non-technical stoppage following the expiration of their penalty time.	

7.2.2 If the penalties are simultaneous, possession shall be awarded to the team with the lesser penalty time, or, if penalty times are equal, the ball shall remain with the team in possession at the time of the first infraction, however if ball was loose then a faceoff will restart play.

Situation 13	
Team "A"	Team "B"
A1 - 2min + 5min @ 6:00	B1 - 5min + GM @ 6:00
<p>Floor Strength 4 on 5. Team "B" possession. B1 removed from the game (no In-Home required). A1 - 2min is put on the game clock and is served by Team "A" In-Home. A1 returns to the floor at the first non-technical stoppage after 1:00 since any time served by the In-Home reduces the total penalty time.</p>	

Situation 15	
Team "A"	Team "B"
A1 - 2min @ 4:00	B1 - 2min @ 4:00
A2 - 2min @ 4:00	B2 - 2min @ 4:00
<p>Floor Strength 5 on 5. Play will restart with the team in possession prior to the stoppage in play. A1, A2, B1 and B2 return to the floor at the first non-technical stoppage following the expiration of their penalty time.</p>	

Situation 15b	
Team "A"	Team "B"
A1 - 2min @ 4:00	B1 - 2min @ 4:00
Without any other penalties currently on the penalty clock, which would create a 4 on 4	
A2 - 2min @ 4:15	
At 4:15 play restarts 4 on 3 for Team B	
A3 - 2min @ 4:30	
This will result in a penalty shot for Team B. PENALTY SHOT FOR TEAM B. RESTART FLOOR STRENGTH 4 ON 3 WITH A FACEOFF. ROLL THE BOX, IN THIS CASE A2 IS RELEASED, A3 GOES IN THE BOX AS THE A1 AND B1 COINCIDENTALS ARE 'LOCKED IN' AND WILL RETURN TO THE FLOOR UPON THEIR EXPIRATION OF PENALTY TIME.	

Situation 16	
Team "A"	Team "B"
A1 - 2min @ 4:00	B1 - 2min + 2min @ 4:00
A2 - 2min @ 4:00	
Floor Strength 5 on 5. Apply 7.2.2 to determine possession for the restart of play. Total penalty time is equal therefore all penalty time cancels out. No penalty time is put on the game clock. A1, A2, and B1 will return to the floor at the first non-technical stoppage following the expiration of their penalty time.	

7.2.2 If the penalties are simultaneous, possession shall be awarded to the team with the lesser penalty time, or, if penalty times are equal, the ball shall remain with the team in possession at the time of the first infraction, however if ball was loose then a faceoff will restart play.

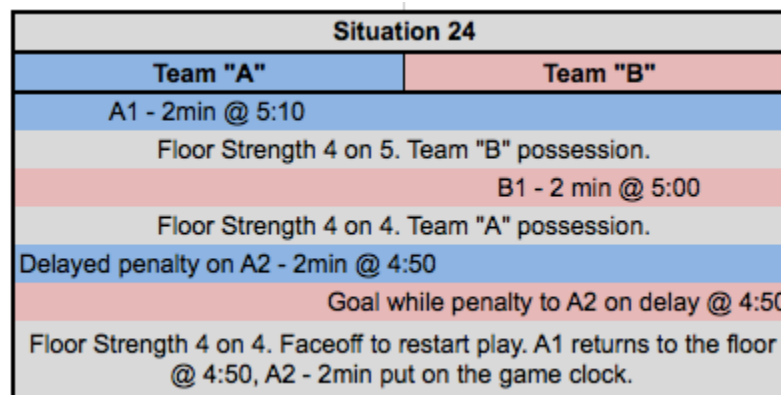
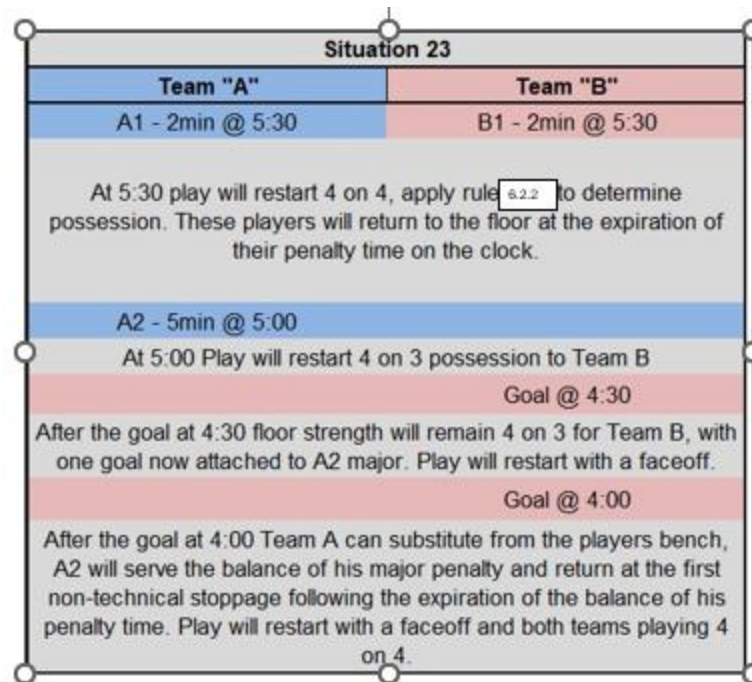
Situation 17	
Team "A"	Team "B"
A1 - 2min @ 4:00 A2 - 2min @ 4:00	B1 - 2min @ 4:00
<p>Floor Strength 4 on 5. Team "B" possession. Team "A" Captain has the choice as to which player's penalty time goes on the clock (A1 or A2) and remaining player (A1 or A2) penalty is coincidental with B1 and they will release at the first non-technical stoppage following the expiration of their penalty time.</p>	

Situation 18	
Team "A"	Team "B"
A1 - 2min @ 4:00 A2 - 2min @ 4:00	B1 - 2min @ 4:00 B2 - 2min + 2min @ 4:00
<p>Floor Strength 5 on 4. Team "A" possession. One of B2 - 2min appears on the game clock and is served by Team "B" In-Home. Team "B" In-Home returns to the floor at the expiration of the 2min penalty. All other players return to the floor at the first non-technical stoppage following the expiration of their penalty time (including B2 since any time served by the In-Home reduces the total penalty time).</p>	

Situation 19	
Team "A"	Team "B"
A1 - 2min @ 4:00	B1 - 2min + 2min @ 4:00
<p>Floor Strength 5 on 4. Team "A" possession. One of B1 - 2min appears on the clock and is served by Team "B" In-Home. Team "B" In-Home returns to the floor at the expiration of the 2min penalty. A1 and B1 return to the floor at the first non-technical stoppage following the expiration of their penalty time (including B1 since any time served by the In-Home reduces the total penalty time).</p>	

Situation 20	
Team "A"	Team "B"
A1 - 2min @ 4:00	B1 - 2min + 2min @ 4:00
	B2 - 2min @ 4:00
<p>Floor Strength 5 on 4. Team "A" possession. B1 - 4min (2min + 2min) goes on the game clock. A1 and B2 return to the floor at the first non-technical stoppage following the expiration of their penalty time.</p>	

Situation 22	
Team "A"	Team "B"
	B1 - 2min @ 6:00
Floor Strength 5 on 4. Team "A" possession.	
A1 - 2min @ 5:30	
Floor Strength 4 on 4. Team "B" possession.	
A2 - 2min @ 5:00	
Floor Strength 3 on 4. Team "B" possession.	
	Goal @ 4:30
Floor Strength 4 on 4. A1 returns to the floor @ 4:30.	



7.2.2 If the penalties are simultaneous, possession shall be awarded to the team with the lesser penalty time, or, if penalty times are equal, the ball shall remain with the team in possession at the time of the first infraction, however if ball was loose then a faceoff will restart play.

Situation 25	
Team "A"	Team "B"
A1 - 2min @ 4:00 A2 - 5min @ 4:00	B1 - 2 min @ 4:00
Floor Strength 4 on 5. Team "B" possession.	
Goal @ 3:30	
Floor strength remains 4 on 5. 1st goal off A2 - 5min	
Goal @ 2:50	
Floor strength 5 on 5. 2nd goal off A2 - 5min. Team "A" can substitute from their bench but A2 will return to the floor at the first non-technical stoppage following the expiration of total time. A1 and B1 return to the floor at the first non-technical stoppage following the expiration of their penalty time.	

Situation 26	
Team "A"	Team "B"
A1 - 2min @ 4:00	B1 - 2 min + 5min @ 4:00
Floor Strength 4 on 5. Team "A" possession. B1 - 5min goes on the game clock and is served by B1. Team "B" In-Home will sit for B1 - 2min penalty. A1 and Team "B" In-Home will return to the floor at the first non-technical stoppage following the expiration of their penalty time.	

Situation 27	
Team "A"	Team "B"
A1 - 2min @ 6:00	
Floor strength 4 on 5. Team "B" possession.	
B1 - 2min @ 5:30	
Floor strength 4 on 4. Team "A" possession.	
A2 - 5min @ 5:00	
Floor strength 3 on 4. Team "B" possession.	
Goal @ 4:10	
Floor strength 4 on 4. A1 returns to the floor @ 4:10.	

Situation 28	
Team "A"	Team "B"
A1 - 5min @ 6:00	
Floor strength 4 on 5. Team "B" possession.	
Goal @ 5:00	
Floor strength remains 4 on 5. 1st goal off A1 - 5min	
A2 - 2min @ 4:30	
Floor strength 3 on 5. Team "B" possession.	
B1 - 2min @ 3:40	
Floor strength 3 on 4. Team "A" possession.	
Goal @ 2:50	
Floor strength 4 on 4. 2nd goal off the A1 - 5min. Team "A" can substitute from their bench but A1 will return to the floor at the first non-technical stoppage following the expiration of their total penalty time.	
Once a goal comes off a major penalty, the next powerplay goal will count against the major penalty. You continue to work on the major until its completion.	

Situation 29	
Team "A"	Team "B"
A1 - 5min @ 4:00	B1 - 5min @ 4:00
Floor Strength 5 on 5. Apply 7.2.2 to determine possession for the restart of play. Total penalty time is equal therefore all penalty time cancels out. No penalty time is put on the game clock. A1 and B1 will return to the floor at the first non-technical stoppage following the expiration of their penalty time.	

7.2.2 If the penalties are simultaneous, possession shall be awarded to the team with the lesser penalty time, or, if penalty times are equal, the ball shall remain with the team in possession at the time of the first infraction, however if ball was loose then a faceoff will restart play.

Situation 30	
Team "A"	Team "B"
A1 - 2min + 5min @ 6:00	B1 - 5min @ 6:00
Floor Strength 4 on 5. Team "B" possession. A1 - 2min goes on the game clock and is served by Team "A" In-Home. Team "A" In-Home returns to the floor at the expiration of the 2min penalty. A1 and B1 return to the floor at the first non-technical stoppage after 1:00 since any time served by the In-Home reduces the total penalty time.	

Situation 31	
Team "A"	Team "B"
A1 - 5min @ 4:00	B1 - 5min @ 4:00
A2 - 5min @ 4:00	B2 - 5 min @ 4:00
Floor Strength 5 on 5. Play will restart with the team in possession prior to the stoppage in play. A1, A2, B1 and B2 return to the floor at the first non-technical stoppage following the expiration of their penalty time.	

Situation 32	
Team "A"	Team "B"
A1 - 2min + 5min @ 6:00 A2 - 5min @ 6:00	B1 - 5min @ 6:00 B2 - 5 min @ 6:00
Floor Strength 4 on 5. Team "B" possession. A1 - 2min goes on the game clock and is served by Team "A" In-Home. Team "A" In-Home returns to the floor at the expiration of the 2min penalty. A1, A2, B1 and B2 return to the floor at the first non-technical stoppage after 1:00 since any time served by the In-Home reduces the total penalty time.	

Situation 33	
Team "A"	Team "B"
A1 - 2min + 5min @ 4:00	B1 - 2min + 5min @ 4:00
Floor Strength 5 on 5. Apply 7.2.2 to determine possession for the restart of play. Total penalty time is equal therefore all penalty time cancels out. No penalty time is put on the game clock. A1 and B1 will return to the floor at the first non-technical stoppage following the expiration of their penalty time.	

7.2.2 If the penalties are simultaneous, possession shall be awarded to the team with the lesser penalty time, or, if penalty times are equal, the ball shall remain with the team in possession at the time of the first infraction, however if ball was loose then a faceoff will restart play.

Situation 34	
Team "A"	Team "B"
A1 - 5min @ 6:00	B1 - 5min @ 6:00 B2 - 5 min @ 6:00
Floor Strength 5 on 4. Team "A" possession. Team "B" must declare whether B1 or B2's penalty time is going on the game clock. B1 or B2 (whichever appears on the clock) is treated as a standard 5min penalty and releases at its expiration. A1 and B1/B2 (whichever is NOT on the clock) will return to the floor at the first non-technical stoppage following the expiration of their penalty time.	

Situation 35	
Team "A"	Team "B"
A1 - 2min + 5min @ 10:00	B1 - 2min + 2min + 5min @ 10:00
<p>Floor Strength 5 on 4. Team "A" possession. B1 - 2min goes on the game clock and is served by Team "B" In-Home. Team "B" In-Home returns to the floor at the expiration of the 2min penalty. A1 and B1 return to the floor at the first non-technical stoppage after 3:00 since any time served by the In-Home reduces the total penalty time.</p>	

Situation 36	
Team "A"	Team "B"
A1 - 2min @ 6:00 A2 - 5min @ 6:00	B1 - 2min + 5min @ 6:00
<p>Floor Strength 5 on 5. Apply 7.2.2 to determine possession for the restart of play. Total penalty time is equal therefore all penalty time cancels out. No penalty time is put on the game clock. A1, A2 and B1 will return to the floor at the first non-technical stoppage following the expiration of their penalty time.</p>	

7.2.2 If the penalties are simultaneous, possession shall be awarded to the team with the lesser penalty time, or, if penalty times are equal, the ball shall remain with the team in possession at the time of the first infraction, however if ball was loose then a faceoff will restart play.

Situation 37	
Team "A"	Team "B"
A1 - 2min + 5min @ 9:00	B1 - 2min + 5min @ 9:00
A2 - 2min + 2min + 5min @ 9:00	B2 - 5min + 5min + GM @ 9:00
<p>Floor Strength 4 on 4. Team "A" possession. B2 is removed from the game. A2 2min + 2min goes on the game clock and is served by Team "A" In-Home. B2 5min goes on the game clock and is served by Team "B" In-Home. Team "A" In-Home returns to the floor at the expiration of the 2min + 2min penalties. Floor Strength is then 5 on 4. Team "B" In-Home returns to the floor at the expiration of the 5min penalty. A1 and B1 will return to the floor at the first non-technical stoppage following the expiration of their penalty time. A2 will return to the floor at the first non-technical stoppage after 4:00 since any time served by the In-Home reduces the total penalty time.</p>	

Situation 38	
Team "A"	Team "B"
A1 - 2min + 5min @ 10:00	B1 - 2min + 2 min + 5min @ 10:00
A2 - 5min @ 10:00	B2 - 5min + 5min + GM @ 10:00
<p>Floor Strength is 5 on 4. Team "A" possession. B2 is removed from the game. Team "B" In-Home shall serve 2min + 5min (7min on the game clock) and will return to the floor following the expiration of the 2min + 5min penalties. A1 and A2 return to the floor on a non-technical stoppage after their penalty time expires. B1 will return to the floor at the first non-technical stoppage after 3:00 since any time served by the In-Home reduces the total penalty time.</p>	

Situation 39	
Team "A"	Team "B"
A1 - 2min @ 4:00	B1 - 2min @ 4:00
A2 - 2min + 2min @ 4:00	B2 - 2min @ 4:00
Floor Strength 4 on 5. Team "B" possession. One of A2 - 2min appears on the clock and is served by Team "A" In-Home. Team "A" In-Home returns to the floor at the expiration of the 2min penalty. All other players return to the floor at the first non-technical stoppage following the expiration of their penalty time (including A2 since any time served by the In-Home reduces the total penalty time).	

Situation 40	
Team "A"	Team "B"
A1 - 2min + 2min @ 4:00	
Floor Strength 4 on 5. Team "B" possession.	
Goal @ 2:30	
Floor Strength 4 on 5. First 2min terminates and the second 2min begins at 3:30	

Situation 41	
Team "A"	Team "B"
A1 - 5min @ 6:00	
Floor Strength 4 on 5. Team "B" possession.	
A2 - 2min @ 5:00	
Floor Strength 3 on 5. Team "B" possession.	
Goal @ 4:50	
Floor Strength 4 on 5. A2 returns to the floor @ 4:50.	
Goal @ 4:30	
Floor Strength 4 on 5. First goal off of A1 - 5min.	

Situation 42	
Team "A"	Team "B"
A1 - 2min + 2min @ 6:00	
Floor Strength 4 on 5. Team "B" possession.	
A2 - 2min @ 5:00	
Floor Strength 3 on 5. Team "B" possession.	
Goal @ 4:30	
Floor Strength 4 on 5. A2 returns to the floor @ 4:30. A1's penalty time continues to run.	
Goal @ 3:30	
Floor Strength 5 on 5. A1 returns to the floor @ 3:30.	

Situation 43	
Team "A"	Team "B"
A1 - 2min + 5min @ 4:00	
A2 - 2min @ 4:00	
Floor Strength 3 on 5. Team "B" possession.	
Goal @ 3:30	
Floor Strength 4 on 5. A2 returns to the floor @ 3:30.	
Goal @ 1:30	
Floor strength remains 4 on 5. 1st goal off A2 - 5min (A1 2min is served first and expired at 2:00).	

Situation 44	
Team "A"	Team "B"
A1 - 2min + 5min @ 8:00	
Floor Strength 4 on 5. Team "B" possession.	
A2 - 2min @ 4:30	
Floor Strength 3 on 5. Team "B" possession.	
Goal @ 3:30	
Floor Strength 4 on 5. A2 returns to the floor @ 3:30. A1 serves 2min first so at 3:30 A1 is serving his 5min penalty and A2 is serving 2min.	

Situation 45	
Team "A"	Team "B"
A1 - 5min @ 6:00	
Floor Strength 4 on 5. Team "B" possession.	
Goal @ 5:30	
Floor strength remains 4 on 5. 1st goal off A1 - 5min.	
A2 - 2min + 2min @ 5:00	
Floor Strength 3 on 5. Team "B" possession.	
Goal @ 4:30	
Floor Strength 4 on 5. 2nd goal off A1 - 5min. Team "A" can substitute from their bench but A1 will return to the floor at the first non-technical stoppage following the expiration of total penalty time.	

Situation 46	
Team "A"	Team "B"
A1 - 2min + 5min @ 8:00	
Floor Strength 4 on 5. Team "B" possession.	
Delayed penalty on A2 - 2min @ 6:30	
Goal while penalty to A2 on delay @ 6:30	
Floor Strength 4 on 5. A2 - 2min wiped out, A1 penalty remains unchanged.	

Situation 47	
Team "A"	Team "B"
A1 - 2min @ 5:00	
Floor Strength 4 on 5. Team "B" possession.	
Delayed penalty on A2 - 2min @ 4:30	
Delayed penalty on A3 - 2min @ 4:30	
Penalty Shot for Team "B." A1 returns to the floor @ 4:30 and A2/A3 enter the penalty box to serve 2min. Floor Strength 3 on 5 after penalty shot (outcome of PS is irrelevant). Play restarts with a faceoff.	

Situation 48	
Team "A"	Team "B"
A1 - 5min @ 5:00	
Floor Strength 4 on 5. Team "B" possession.	
A2 - 2min @ 4:30	
Floor Strength 3 on 5. Team "B" possession.	
Delayed penalty on A3 - 2min @ 4:00	
Penalty Shot for Team "B." A2 returns to the floor @ 4:00 and A3 enters the penalty box to serve 2min. Nothing happens to A1 penalty time. Floor Strength 3 on 5 after penalty shot (outcome of PS is irrelevant). Play restarts with a faceoff.	

Situation 49	
Team "A"	Team "B"
A1 - 5min @ 5:00	
Floor Strength 4 on 5. Team "B" possession.	
A2 - 5min @ 4:30	
Floor Strength 3 on 5. Team "B" possession.	
Delayed penalty on A3 - 5min @ 4:00	
<p>Penalty Shot for Team "B." A1's penalty time is removed from the game clock (A1 will serve the balance of the penalty time and will return to the floor at the first non-technical stoppage following the expiration of total penalty time). A2's penalty continues to serve and A3 - 5min is put on the game clock.</p>	

Situation 50	
Team "A"	Team "B"
A1 - 5min @ 4:00	
Floor Strength 4 on 5. Team "B" possession.	
Goal @ 3:45	
Floor strength remains 4 on 5. 1st goal off A1 - 5min.	
A2 - 2min @ 3:30	
Floor Strength 3 on 5. Team "B" possession.	
Delayed penalty on A3 - 5min @ 3:00	
<p>Penalty Shot for Team "B." A1 penalty time is erased from the penalty clock. Team "A" can substitute from their bench but A1 will return to the floor at the first non-technical stoppage after penalty time expires. A2 continues to serve penalty time and A3 penalty time is put on the game clock. Strength 3 on 5 after penalty shot (outcome of PS is irrelevant). Play restarts with a faceoff.</p>	

Situation 51	
Team "A"	Team "B"
A1 - 2min @ 4:00	B1 - 5 min @ 4:00
Floor Strength 4 on 4. Team "A" possession. A1 and B1 return to the floor at the expiration of their penalty time.	

Situation 52	
Team "A"	Team "B"
A1 - 5min @ 3:30 of Q4	B1 - 2min @ 3:30 of Q4
Floor Strength 4 on 5. Team "B" possession. Instruct the game clock operator to put 3min on the penalty clock for Team "A." Team "A" In-Home will serve the 3min penalty which is treated like a traditional major penalty for the purposes of releasing from the penalty box. A1 will return to the floor at the end of the game or first non-technical stoppage after penalty time expires in OT. B1 will return to the floor at the first non-technical stoppage after penalty time expires.	
6.3.3	This rule only applies when penalties are assessed to one player on each team or when coincidental penalties are negated leaving one player on each team with the aforementioned penalties.

6.3.3 MAJOR AND MINOR ASSESSED UNDER FIVE MINUTES IN REGULATION OR IN OVERTIME - During the last five (5) minutes of regulation time, or at any time in overtime, when a minor penalty and a major penalty are assessed to two opposing players on the same stoppage of play, the three-minute differential shall be served immediately as a major penalty. This is also applicable when coincidental penalties are negated, leaving the aforementioned example. In such instances, the team of the player receiving the major penalty must place the replacement player in the penalty bench prior to expiration of the penalty. The differential will be recorded on the penalty clock as a three (3) minute penalty and served in the same manner as a major penalty.

Situation 53	
Team "A"	Team "B"
A1 - 5min @ 3:30 of Q4 A2 - 2min @ 3:30 of Q4	B1 - 2min @ 3:30 of Q4 B2 - 2min @ 3:30 of Q4
Floor Strength 4 on 5. Team "B" possession. A2 and one of B1/B2 cancel out. Instruct the game clock operator to put 3min on the penalty clock for Team "A." Team "A" In-Home will serve the 3min penalty which is treated like a traditional major penalty for the purposes of releasing from the penalty box. A1 will return to the floor at the end of the game or first non-technical stoppage after penalty time expires in OT. B1 will return to the floor at the first non-technical stoppage after penalty time expires.	
6.3.3 This rule only applies when penalties are assessed to one player on each team or when coincidental penalties are negated leaving one player on each team with the aforementioned penalties.	

6.3.3 MAJOR AND MINOR ASSESSED UNDER FIVE MINUTES IN REGULATION OR IN OVERTIME - During the last five (5) minutes of regulation time, or at any time in overtime, when a minor penalty and a major penalty are assessed to two opposing players on the same stoppage of play, the three-minute differential shall be served immediately as a major penalty. This is also applicable when coincidental penalties are negated, leaving the aforementioned example. In such instances, the team of the player receiving the major penalty must place the replacement player in the penalty bench prior to expiration of the penalty. The differential will be recorded on the penalty clock as a three (3) minute penalty and served in the same manner as a major penalty.

Situation 54	
Team "A"	Team "B"
	B1 - 2min @ 2:30 of Q4
Floor Strength 5 on 4. Team "A" possession.	
A1 - 5min @ 0:56 of 4Q	B2 - 2 min @ 0:56 of 4Q B3 - 2 min @ 0:56 of 4Q
Penalty Shot for Team "A." B1 returns to the floor @ 0:56 and A1/B2/B3 enter the penalty box (all penalty time appears on the clock). Floor Strength 4 on 3 after penalty shot (outcome of PS is irrelevant). Play restarts with a faceoff.	

Situation 55	
Team "A"	Team "B"
A1 - 5min @ 4:00 of 4Q	
Floor Strength 4 on 5. Team "B" possession. Treated as a normal major penalty. DO NOT send players to the dressing room.	

Situation 56	
Team "A"	Team "B"
A1 - 5min Match @ 6:00	
Floor Strength 4 on 5. Team "B" possession. A1 is removed from the game. Team "A" In-Home serves 5min Match	
Goal @ 5:45	
Floor Strength 4 on 5. 1st goal off A1 - 5min Match.	
Goal @ 5:00	
Floor Strength 4 on 5. 2nd goal off A1 - 5min Match.	
Goal @ 2:00	
3rd goal off A1 - 5min Match. Team "A" In-Home returns to the floor. Floor Strength 5 on 5.	

Situation 57	
Team "A"	Team "B"
A1 (Goalie) - 5min @ 7:00	
Floor Strength 4 on 5. Team "B" possession. A1 (Goalie) remains in the net. Team "A" In-Home serves A1 (Goalie) - 5min.	

Situation 58	
Team "A"	Team "B"
A1 - 5min Match @ 4:00	
Floor Strength 4 on 5. Team "B" possession.	
Goal @ 3:30	
Floor Strength 4 on 5. 1st goal against A1 - 5 min Match.	
A2 - 2min @ 3:00	
Floor Strength 3 on 5. Team "B" possession.	
Goal @ 2:30	
Floor Strength 3 on 5. 2nd goal against A1 - 5min Match.	

Situation 59	
Team "A"	Team "B"
A1 - 2min @ 8:00	
Floor Strength 4 on 5. Team "B" possession.	
A2 - 2min INST, 5min FI & GM @ 7:30	B1 - 5min Match @ 7:30
Floor Strength 3 on 5. Team "B" possession. A2 and B1 are removed from the game. The A2 - 5min and B1 - 5min Match cancel out. Team "A" In-Home will serve A2- 2min. Team "B" does not require an In-Home.	

Situation 60	
Team "A"	Team "B"
A1 - 5min @ 7:00	
Floor Strength 4 on 5. Team "B" possession.	
A1 - 2min @ 6:30 (while in box)	
Floor Strength 4 on 5. Team "B" possession. At 6:30, have the game clock operator add the 2min to the penalty time already serving. Since no goals have been scored against A1 - 5min, A1 - 2min will be served first before the balance of the 5min.	

Situation 61	
Team "A"	Team "B"
Delayed penalty on A1 - 5min @ 6:00	
Goal while penalty to A1 on delay @ 6:00	
A2 - 2min @ 6:00 (immedaiteley after the goal)	
Floor Strength 4 on 5. Face Off to restart play. A2 - 2min is cancelled by the goal. A1 - 5min goes onto the game clock with no goals attached.	

Situation 62	
Team "A"	Team "B"
A1 - 2min @ 6:00 A2 - 5min @ 6:00	
Floor strength 3 on 5. Team "B" possession.	
A3 - 4min @ 5:00 A4 - 2min @ 5:00	
2 Penalty Shots for Team "B." A1 returns to the floor and A4 does not serve penalty time. A2 - 5min remains unchanged and A3 - 4min goes onto the penalty clock. Floor Strength 3 on 5 after penalty shots (outcome of PSs is irrevelevent). Play restarts with a faceoff.	

Situation 63	
Team "A"	Team "B"
A1 - 5min @ 6:00 A2 - 5min @ 6:00	
Floor strength 3 on 5. Team "B" possession.	
A3 - 2min @ 5:00 A4 - 2min @ 5:00	
2 Penalty Shots for Team "B." A1 - 5min and A2 - 5min remain unchanged. A3 and A4 penalties are unserved as a result of PSs. Floor Strength 3 on 5 after penalty shots (outcome of PSs is irrevelevant). Play restarts with a faceoff.	

Situation 64	
Team "A"	Team "B"
A1 - 2min @ 6:00 A2 - 5min @ 6:00	
Floor strength 3 on 5. Team "B" possession.	
A3 - 5min Match @ 5:00 A4 - 2min @ 5:00	
2 Penalty Shots for Team "B." A1 returns to the floor and A4 - 2min is mitigated by a PS. A2 - 5min remains unchanged and A3 - 5min Match goes onto the penalty clock. A3 is removed from the game and the penalty time is served by Team "A" In-Home. Floor Strength 3 on 5 after penalty shots (outcome of PSs is irrevelevant). Play restarts with a faceoff.	